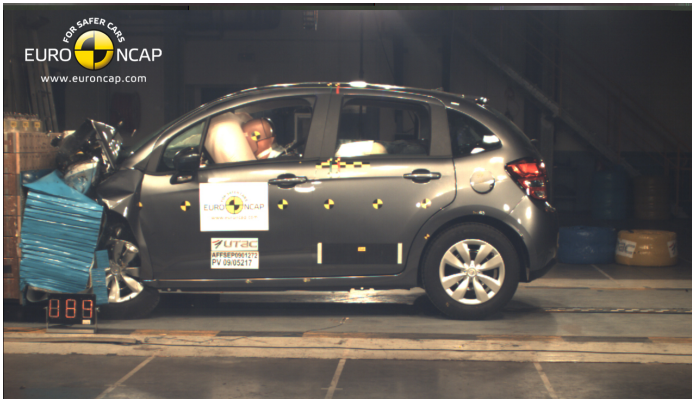


Citroen C3

Citroen C3, 1.4 diesel, LHD

2009



ADULT OCCUPANT

83%



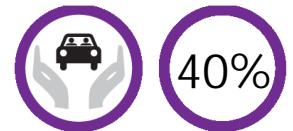
CHILD OCCUPANT

74%



PEDESTRIAN

33%



SAFETY ASSIST

40%

ADULT OCCUPANT

Total 30 pts | 83%

FRONTAL IMPACT

14,4 pts



Driver



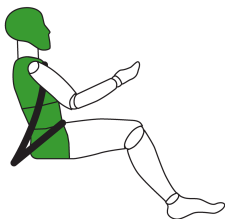
Passenger

SIDE IMPACT CAR

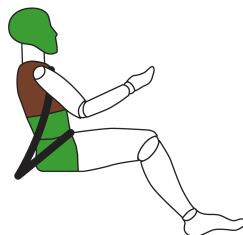
8 pts

SIDE IMPACT POLE

6,5 pts



Car



Pole

REAR IMPACT (WHIPLASH)

0,9 pts



FRONTAL IMPACT

HEAD

Driver airbag contact	stable
Passenger airbag contact	stable

CHEST

Passenger compartment	stable
Windscreen Pillar rearward	24mm
Steering wheel rearward	none
Steering wheel upward	none
Chest contact with steering wheel	none

UPPER LEGS, KNEES AND PELVIS

Stiff structures in dashboard	none
Concentrated loads on knees	none

LOWER LEGS AND FEET

Footwell Collapse	none
Rearward pedal movement	none
Upward pedal movement	none

SIDE IMPACT

Head protection airbag	Yes
Chest protection airbag	Yes

WHIPLASH

Seat description	Standard cloth, continuous manual adjust
Head restraint type	Passive
Geometric assessment	0,5 pts

TESTS

- High severity	0 pts
- Medium severity	0,7 pts
- Low severity	1,3 pts

CHILD OCCUPANT

Total 36 pts | 74%

18 MONTH OLD CHILD

Restraint Britax Romer Baby Safe
Group 0, 0+
Facing rearward
Installation Adult seatbelt



PERFORMANCE **9,5 pts**
 INSTRUCTIONS **4 pts**
 INSTALLATION **2 pts**

FRONTAL IMPACT

Head forward movement protected
 Head acceleration good
 Chest load fair

SIDE IMPACT

Head containment protected
 Head acceleration good

3 YEAR OLD CHILD

Restraint Britax Romer Duo Plus
Group 1
Facing forward
Installation ISOFIX anchorages and top tether



PERFORMANCE **11,6 pts**
 INSTRUCTIONS **4 pts**
 INSTALLATION **2 pts**

FRONTAL IMPACT

Head forward movement protected
 Head acceleration good
 Chest load fair

SIDE IMPACT

Head containment protected
 Head acceleration good

VEHICLE BASED ASSESSMENT

3 pts

Airbag warning Label

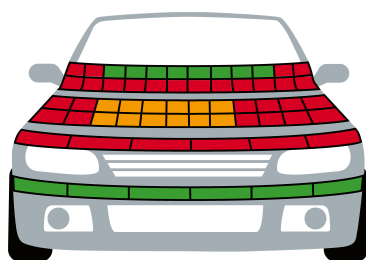
Text and pictogram warning label permanently attached to both sides of the passenger sun visor.

PEDESTRIAN

Total 12 pts | 33%

SAFETY ASSIST

Total 3 pts | 40%



GOOD
 MARGINAL
 POOR

HEAD 5,8 pts
 PELVIS 0 pts
 LEG 6 pts

SPEED LIMITATION ASSISTANCE 0,8 pts

- active, optional

ELECTRONIC STABILITY CONTROL (ESC) 0 pts

- optional

SEATBELT REMINDER 2 pts

- driver 1 pts
 - passenger 1 pts

DETAILS OF TESTED CAR

SPECIFICATIONS

Tested model	Citroen C3, 1.4 diesel, LHD
Body type	5 door hatchback
Year of publication	2009
Kerb weight	1065kg
VIN from which rating applies	applies to all C3's of the specification tested

SAFETY EQUIPMENT

Front seatbelt pretensioners	
Front seatbelt load limiters	
Driver frontal airbag	single stage
Front passenger frontal airbag	single stage
Side body airbags	
Side head airbags	

COMMENTS

Adult occupant

The passenger compartment remained stable in the frontal impact. Dummy readings indicated good protection of the front occupants' knees and femurs. Citroen were able to demonstrate that occupants of different sizes, and those sat in different positions, would be offered a similar level of protection. In the side barrier impact, the car scored maximum points, good protection being provided to all vulnerable body areas. In the more severe side pole test, rib deflections indicated weak chest protection but other body areas were well protected. The seat and head restraint provided poor protection against whiplash injuries, scoring no points in the most severe of the three tests performed.

Child occupant

In the frontal impact, forward movement of the 3 year dummy's head was not excessive and the heads of both dummies were contained by the restraints in the side impact. The passenger airbag can be disabled to allow a rearward facing child restraint to be used in that seating position. However, information provided to the driver about the status of the airbag is not sufficiently clear.

Pedestrian

Good protection was provided to pedestrians' legs by the bumper and maximum points were scored. However, the front edge of the bonnet scored no points. The protection offered by the bonnet to a pedestrian's head was marginal or poor in those areas likely to be struck by a child and predominantly poor in those areas where an adult's head might strike.

Safety assist

Electronic Stability Control (ESC) is available on some variants in the model range but is not expected to be fitted as standard in sufficient numbers to qualify for points under Euro NCAP's rating scheme. A driver-set speed limitation device is expected to be fitted as standard to the great majority of cars sold and is an option on all variants in the range. A seatbelt reminder system for driver and front seat passenger is fitted as standard across the model range.