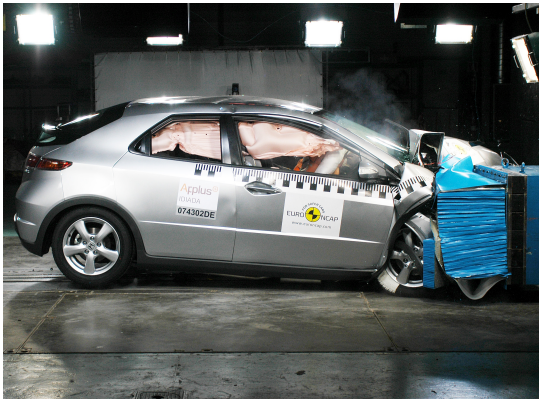


# Honda Civic

Honda Civic, RHD

2009



79%

ADULT OCCUPANT



76%

CHILD OCCUPANT



67%

PEDESTRIAN



86%

SAFETY ASSIST

## ADULT OCCUPANT

Total 28 pts | 79%

### FRONTAL IMPACT

11,9 pts



Driver



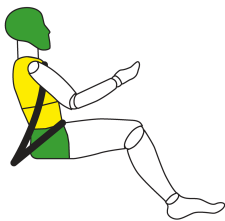
Passenger

### SIDE IMPACT CAR

7,7 pts

### SIDE IMPACT POLE

6,6 pts



Car



Pole

### REAR IMPACT (WHIPLASH)

2,3 pts



GOOD



ADEQUATE



MARGINAL



WEAK



POOR

### FRONTAL IMPACT

#### HEAD

Driver airbag contact	unstable
Passenger airbag contact	stable

#### CHEST

Passenger compartment	stable
Windscreen Pillar rearward	20mm
Steering wheel rearward	none
Steering wheel upward	32mm
Chest contact with steering wheel	none

#### UPPER LEGS, KNEES AND PELVIS

Stiff structures in dashboard	yes: steering column and ignition lock mechanism.
Concentrated loads on knees	none

#### LOWER LEGS AND FEET

Footwell Collapse	none
Rearward pedal movement	brake - 80mm
Upward pedal movement	clutch - 18mm

### SIDE IMPACT

Head protection airbag	Yes
Chest protection airbag	Yes

### WHIPLASH

Seat description	Standard seat, cloth, 4 way manual
Head restraint type	Reactive
Geometric assessment	0 pts

#### TESTS

- High severity	2,4 pts
- Medium severity	2,1 pts
- Low severity	1,8 pts

## CHILD OCCUPANT

Total 37 pts | 76%

## 18 MONTH OLD CHILD

**Restraint** Britax Romer Baby Safe ISOFIX  
**Group** 0, 0+  
**Facing** rearward  
**Installation** ISOFIX anchorages and support frame



PERFORMANCE **11 pts**  
 INSTRUCTIONS **4 pts**  
 INSTALLATION **2 pts**

## FRONTAL IMPACT

Head forward movement protected  
 Head acceleration good  
 Chest load fair

## SIDE IMPACT

Head containment protected  
 Head acceleration good

## 3 YEAR OLD CHILD

**Restraint** Britax Romer Duo Plus ISOFIX  
**Group** 1  
**Facing** forward  
**Installation** ISOFIX anchorages and top tether



PERFORMANCE **9,3 pts**  
 INSTRUCTIONS **4 pts**  
 INSTALLATION **2 pts**

## FRONTAL IMPACT

Head forward movement protected  
 Head acceleration good  
 Chest load fair

## SIDE IMPACT

Head containment protected  
 Head acceleration good

## VEHICLE BASED ASSESSMENT

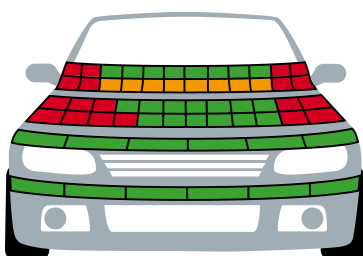
5 pts

## Airbag warning Label

Text and pictogram warning label permanently attached to both sides of the passenger sun visor.

## PEDESTRIAN

Total 24 pts | 67%



GOOD  
 MARGINAL  
 POOR

HEAD 12,2 pts  
 PELVIS 6 pts  
 LEG 6 pts

## SAFETY ASSIST

Total 6 pts | 86%

## SPEED LIMITATION ASSISTANCE 0 pts

- 0, not available

## ELECTRONIC STABILITY CONTROL (ESC) 3 pts

- standard

## SEATBELT REMINDER 3 pts

- driver 1 pts  
 - passenger 1 pts  
 - rear 1 pts

## DETAILS OF TESTED CAR

### SPECIFICATIONS

Tested model	Honda Civic, RHD
Body type	5 door hatchback
Year of publication	2009
Kerb weight	1251kg
VIN from which rating applies	SHHFK27408U000101

### SAFETY EQUIPMENT

Front seatbelt pretensioners	
Front seatbelt load limiters	
Driver frontal airbag	dual stage
Front passenger frontal airbag	dual stage
Side body airbags	
Side head airbags	

## COMMENTS

The results of the Honda Civic, first tested in 2007, have been recalculated into the new rating format. The car is unchanged from the one originally tested.

### Adult occupant

Honda have modified the safety system of the Civic for the 2008 model year car. The timing of the pretensioners has been changed to provide better restraint of the front seat passengers and dual stage frontal airbags have replaced the previous single stage units. However, in the frontal test, the driver's airbag was not sufficiently well inflated to prevent the driver's head from contacting the steering wheel. The passenger compartment remained stable. Structures in the dashboard presented a potential hazard to the driver's femurs. The 2008 Civic has a larger side airbag than its 2006 predecessor. Rib deflections were lower, resulting in a score one point higher than the earlier version. However, protection of the chest was weak in the side pole test. Whiplash protection was rated as marginal.

### Child occupant

From 2009, Honda dealers do not offer a disconnection of the passenger airbag. Therefore, a rearward facing child restraint should not be used in that seating position for 2009 model year cars. There is a clear warning of the dangers of using a rearward-facing child restraint in the front passenger seat. The presence of ISOFIX anchorages in the rear outboard seats was not clearly marked.

### Pedestrian

Honda have made no changes that would influence the results of the pedestrian tests so the results of the car tested in 2006 have been carried over here. Both the bumper and the leading edge of the bonnet scored maximum points for the protection they offered to the legs of pedestrians. The part of the bonnet likely to be struck by a child's head was also rated predominantly 'fair'.

### Safety assist

Vehicle Safety Assist (Honda's electronic stability control system) is standard equipment on all variants in all countries. The seatbelt reminder covers all seating positions and is also standard across the model range.